



INSTRUCTION MANUAL GUIDE D'UTILISATION MANUAL DE INSTRUCCIONES

Item No.: SGP-3; SGP-4

Telescoping Aluminum Screw Gun
Extension Pole Tool with Patented
Universal Saddle. Includes Vynafoam
Comfort Grip.

FITS MOST:

Screw Guns w/ Magazine Attachments



If you have questions or comments, contact us.
Si tiene preguntas o comentarios, contactenos.

800-544-8706 www.docindustries.com

Copyright © 2024 Doc's Industries, Inc. The logo for Doc's Industries, Inc. features the word 'DOC'S' in a stylized font, with the 'O' and 'C' connected. The logo is enclosed in a circular border.

NOTE: Not for use on ceilings over 12 feet.

The SGP™ is not designed to be stacked on other poles to make it reach higher than it was designed to from the factory.

Any modifications or changes made to the SGP™ from its original design are not supported by Doc's Industries, Inc.

The SGP™ comes pre-assembled and ready to use! Simply secure your screw gun following the instructions in the "Securing a screw gun in the SGP™ casting" section on page 3.

SGP™ - General safety warnings:

- Follow all safety instructions for the screw gun you are using with the SGP™.
- Keep work area clean and well lit. Make sure there are no trip hazards such as electrical cords, step stools or other power tools.
- Do not operate tool in hazardous conditions.
- Keep children and bystanders away while operating the tool.
- Stay alert – do not use while tired or under the influence of drugs, alcohol or medication.
- Always use eye protection and other protective equipment such as a dust mask, boots, hard hat and hearing protection appropriate for the conditions.
- Keep proper footing and balance at all times.
- Do not force the tool - use the correct screw gun setting & fasteners for your application.
- Be certain the screw gun is operating properly and is adjusted before lifting to the ceiling.
Most modern screw guns have a depth setting for the fastener and some include an automatic trigger depression system.
- Disconnect the power source before making any adjustments.
- Maintain the SGP™ - check for misalignment, binding or breakage of hose clamp or wire bale pin as well as any other condition that may affect the tool during operation. If damaged, have the tool repaired by a professional before use.



Adjusting the length of the SGP™ pole:

- a. The SGP™ can be used fully collapsed or extended. Adjust the length of your pole accordingly.
- b. To adjust the telescoping pole to the desired length, remove the wire bale pin, extend the pole and reinstall the pin.
- c. To remove the wire bale pin, place your pointer finger and middle finger inside the loop and your thumb above the latch. With a firm grip, pull up and away from the pole tool as shown below.
- d. Once the wire bale pin is removed, slide the outer pole down or up to the desired hole and reinsert the wire bale pin. The inner pole tool section has holes every 2" on center for fine adjustments.
- e. Once the pole is adjusted to the desired length/height, lock the wire bale pin into place.



Securing a screw gun in the SGP™ casting:

- A. Insert the screw gun into the SGP™ casting by approaching at about a 45-degree angle.



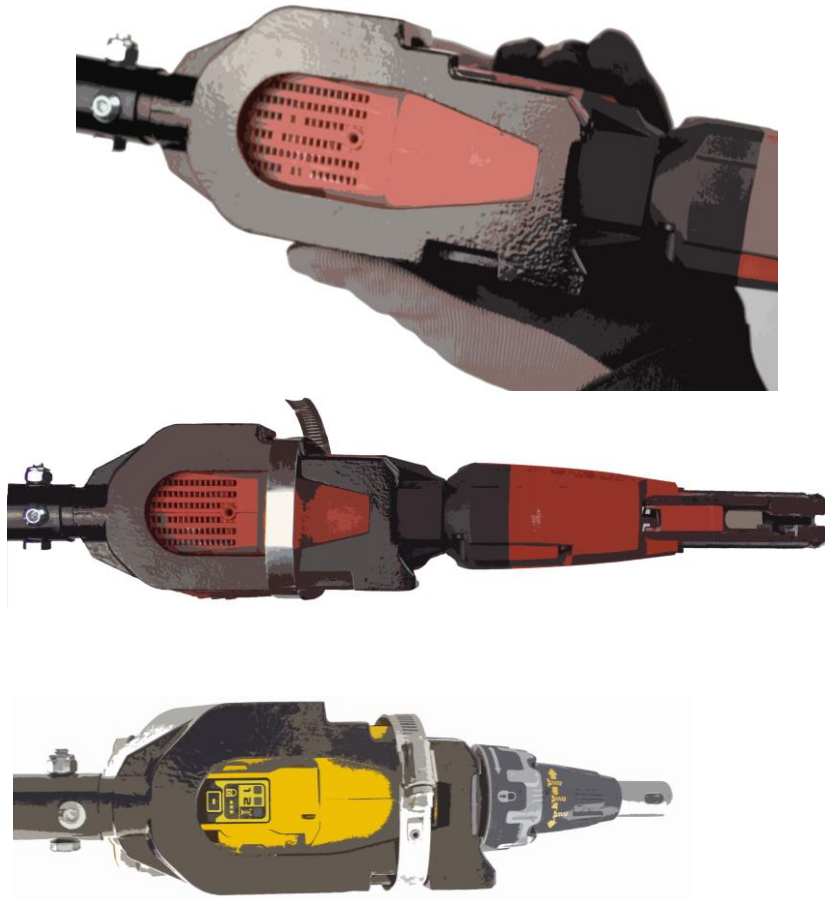
- B. Rotate the screw gun until it is level with the casting and slide it all the way in until the grip of the screw gun is pressed up against the grip section of the SGP™ casting.



- C. The Makita® XSF03 has a built-in tool belt clip that cannot be removed easily. The SGP™ was designed to allow the clip to pass through the opening in the casting. This allows it to sit properly without having to make any modification to the tool.



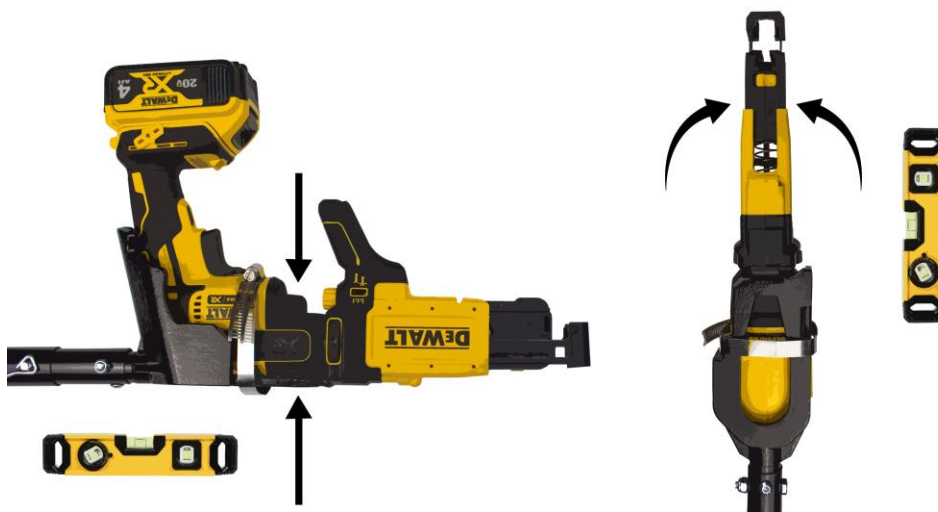
- D. The Hilti® SD 5000-A22 & DeWALT® DCF630 features a tool belt clip that must be removed to allow the tool to sit flush against the SGP™ casting. They are fastened with 2 x machine screws.



- E. Secure the screw gun in place using the provided 90 – 110 mm hose clamp. There are cut outs / notches on the casting that indicate the proper placement of the hose clamp. Use the SGP™ compatibility chart & Hose Clamp Location Charts on pg. 9 & 10 for proper placement. Make sure your screw gun is properly seated in the casting before tightening the hose clamp. Do not over-tighten.



- F. Check that the screw gun is parallel to the pole tool and casting. Check both horizontal and vertical alignment of the screw gun. If not aligned properly, repeat step A.



Operating the SGP™:

- A. Lift the fully adjusted and secured SGP™ tool to the ceiling.
- B. Make sure your screw gun is perpendicular to the substrate you are fastening into.
- C. Always keep your back straight and keep the pole tool close to your body.
- D. Apply lifting force to the pole to engage the screw gun tool's magazine / driver. Start the screw gun by pressing against the substrate.
- E. Do not force the fasteners. Periodically check to make sure the screws are being properly driven to the desired depth.
- F. When the fastener is fully installed, carefully lower the tool and adjust for your next installation.
- G. **If electrical power to the screw gun is interrupted during use and the tool becomes jammed in the ceiling, disconnect the electric power to the screw gun and clear the jam in a safe manner before restoring electric power.**



Troubleshooting the SGP™:

Q. Why won't my screw gun turn on?

A. First check to make sure the battery is fully charged & properly inserted. Check to make sure the screw gun's reverse/forward switch is properly engaged and not set in between reverse/forward.

Make sure your screw gun is installed and secured to the SGP™ casting properly by following the instructions for your specific model of screw gun using the SGP™ compatibility chart & Hose Clamp Location Charts on pg. 9 & 10. Make sure the SGP™ hose clamp is properly tightened.

Q. Why does my screw gun stay on after I release pressure being applied to the substrate?

A. First check to make sure your screw gun tool is working properly. Some models feature a button that keeps the tool on all the time or only on when the magazine attachment is pressed against the substrate. If the screw gun is still spinning slowly or the light on the screw gun is staying on, please refer to the screw gun manufacturer's manual for troubleshooting assistance.

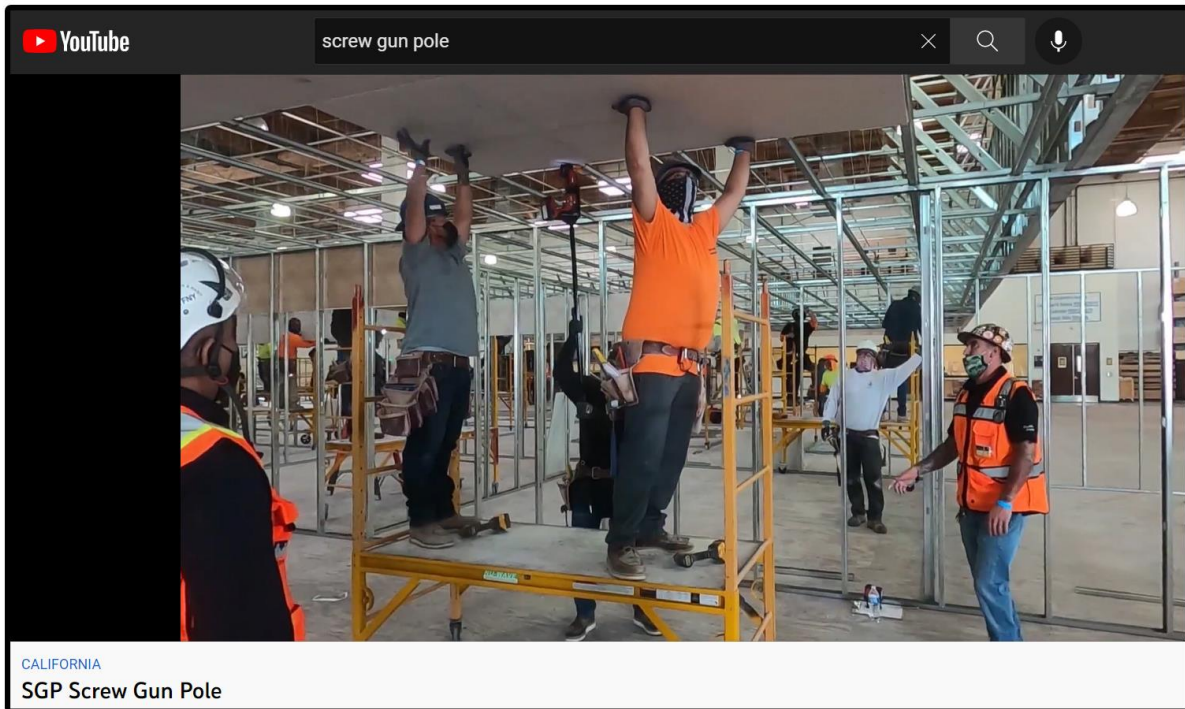
Q. Why won't my SGP™ pole extend?

A. The SGP™ is primarily designed for overhead fastening into a variety of substrates including but not limited to drywall board. Drywall board / gypsum board dust and particles can accumulate in-between the telescoping pole sections of the SGP™. Make sure the poles are clean and free of any dust or burs that may cause friction between the poles.

Q. I need replacement parts, where can I purchase them?

A. Please contact the distributor you originally purchased the SGP™ from, if you are unable to contact the original distributor of your tool, please contact us directly at 800-544-8706 and we will direct you to the closest distributor in your area.

WATCH US ON:



How-to Video Links:

Doc's YouTube Channel: www.youtube.com/docsindustries

SGP™ Screw Gun Pole Video: <https://youtu.be/5BAnPlvPdAw>

SGP™ Screw Gun Compatability Chart & Mounting Guide

BRAND	MODEL NO.	DESCRIPTION	HOSE CLAMP LOCATION
DEWALT®	DCF620	20V MAX* XR® Brushless Drywall Screwgun	1 or 2
DEWALT®	DCF620 w/ DCF6202	20V MAX* XR® Brushless Drywall Screwgun w/ DCF6202 Collated Drywall Screw Gun Attachment	1 or 2
DEWALT®	DCF630*	20V MAX* XR® Brushless Drywall Screwgun	1 or 2
DEWALT®	DCF630* w/ DCF6202	20V MAX* XR® Brushless Drywall Screwgun w/ DCF6202 Collated Drywall Screw Gun Attachment	1 or 2
HILTI®	SD 5000-A22*	22V Cordless drywall screwdriver with 5000 RPM's	1 or 2
HILTI®	SD 5000-A22*w/ SD-M 1 02	22V Cordless drywall screwdriver with 5000 RPM's w/ SD-M 1 02 Collated screw magazine for 1" - 1-1/4" long.	1 or 2
HILTI®	SD 5000-A22*w/ SD-M 2 02	22V Cordless drywall screwdriver with 5000 RPM's w/ SD-M 1 02 Collated screw magazine for 1" - 2" long.	1 or 2
MAKITA®	XSF03**	18V LXT® Lithium-Ion Brushless Cordless 4,000 RPM's Drywall Screwdriver	1 or 2
MAKITA®	XSF03**w/ 01519	18V LXT® Lithium-Ion Brushless Cordless 4,000 RPM's Drywall Screwdriver w/ 01519 Collated screw magazine for 1" to 2-3/16" long.	1 or 2
MILWAUKEE®	2866-20	18V M18 FUEL™ Drywall Screw Gun with 4,500 RPM's	2
MILWAUKEE®	2866-20 w/ 49-20-0001	18V M18 FUEL™ Drywall Screw Gun with 4,500 RPM's w/ 49-20-0001 Collated screw magazine for screws up to 2" and all major brands	2

* **NOTE:** Hilti® SD 5000-A22 & DeWALT® DCF630 features a built-in tool belt clip that must be removed to work with the SGP casting. To remove it loosen the 2 x screws.

****NOTE:** Makita® XSF03 features a built-in tool belt clip that must be inserted through the large opening on the backside of the SGP casting.

NOTE: DeWALT® DCF620, DCF630 & Makita® XSF03 screw guns are also compatible with Grabber® SuperDrive® collated systems. Contact your local Grabber rep for more information regarding the compatability or part numbers for your screw gun tool.

NOTE: DEWALT®, GRABBER®, HILTI®, MAKITA®, MILWAUKEE® & SUPERDRIVER® are all registered trademarks and are in no way affiliated with Doc's® Industries, Inc.

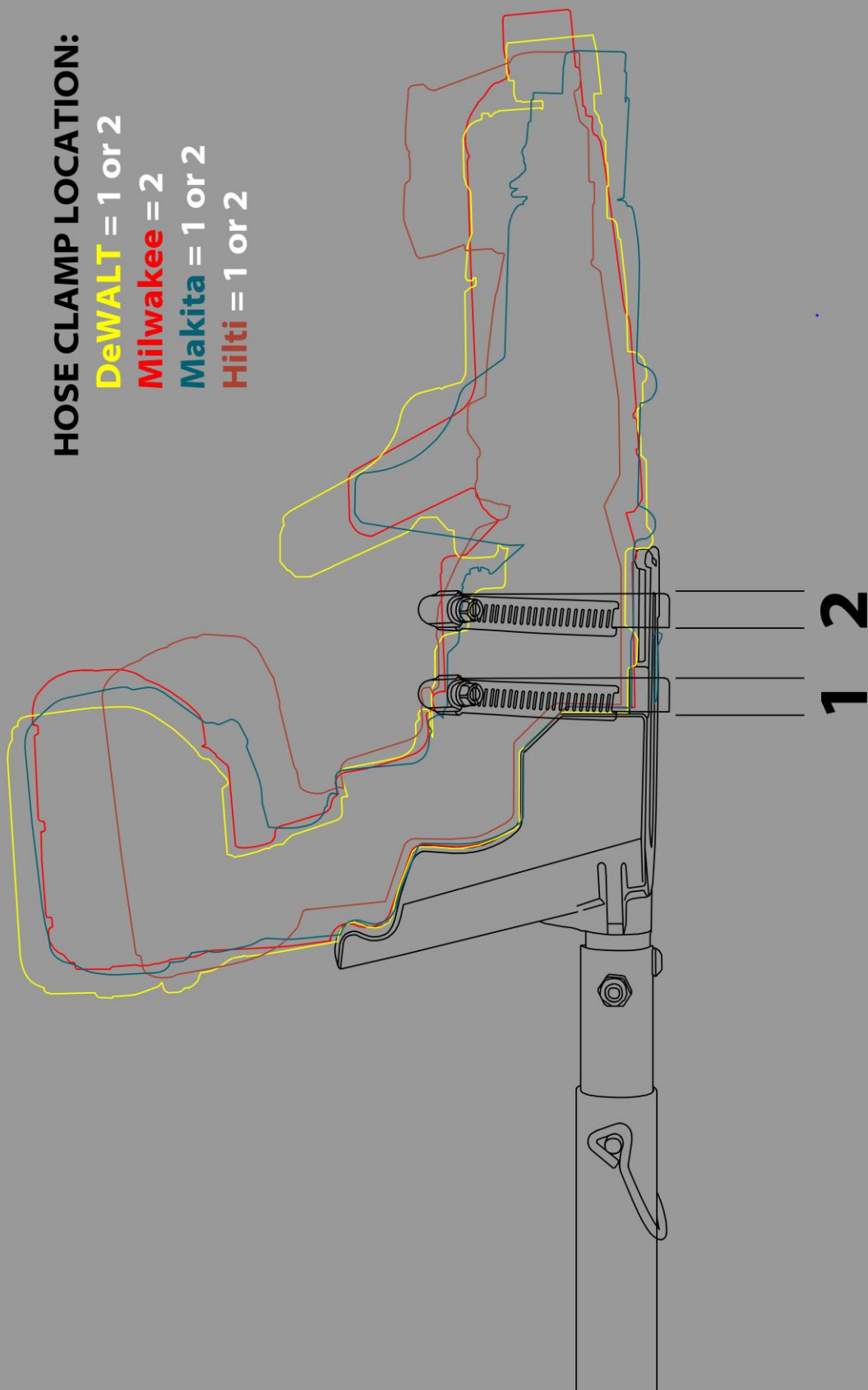
HOSE CLAMP LOCATION:

DeWALT = 1 or 2

Milwaukee = 2

Makita = 1 or 2

Hilti = 1 or 2



Parts Schematic



Profile View



Front View



Part #:	Description	QTY
SGP-Part-01	Aluminum SGP Casting	1 pc.
SGP-Part-02	1/4"-28 x 3/8" Allen set screw	1 pc.
SGP-Part-03	1/4" Hex bolt & Nyloc nut	1 set.
SGP-Part-04	Wire bale adjustment pin	1 pc.
SGP-Part-05	Replacement SGP-4 inner pole	1 pc.
SGP-Part-06	Replacement SGP-4 outer pole	1 pc.
SGP-Part-07	Replacement SGP-3 inner pole	1 pc.
SGP-Part-08	Replacement SGP-3 outer pole	1 pc.
SGP-Part-09	Vynafoam comfort grip 12"	1 pc.
SGP-Part-10	Base driver w/ hardware	1 pc.
SGP-Part-11	Hose clamp 90 - 110 mm	1 pc.